

PARTS OF SECTIONS 11, 12, 13, 14, T. 6 N., R. 3 E., S. L. B. & M.
CAUSEY ESTATES SUBDIVISION NO. 3
 LOTS 119, 120, 122-126

90

TAXING UNIT : 58

IN WEBER COUNTY

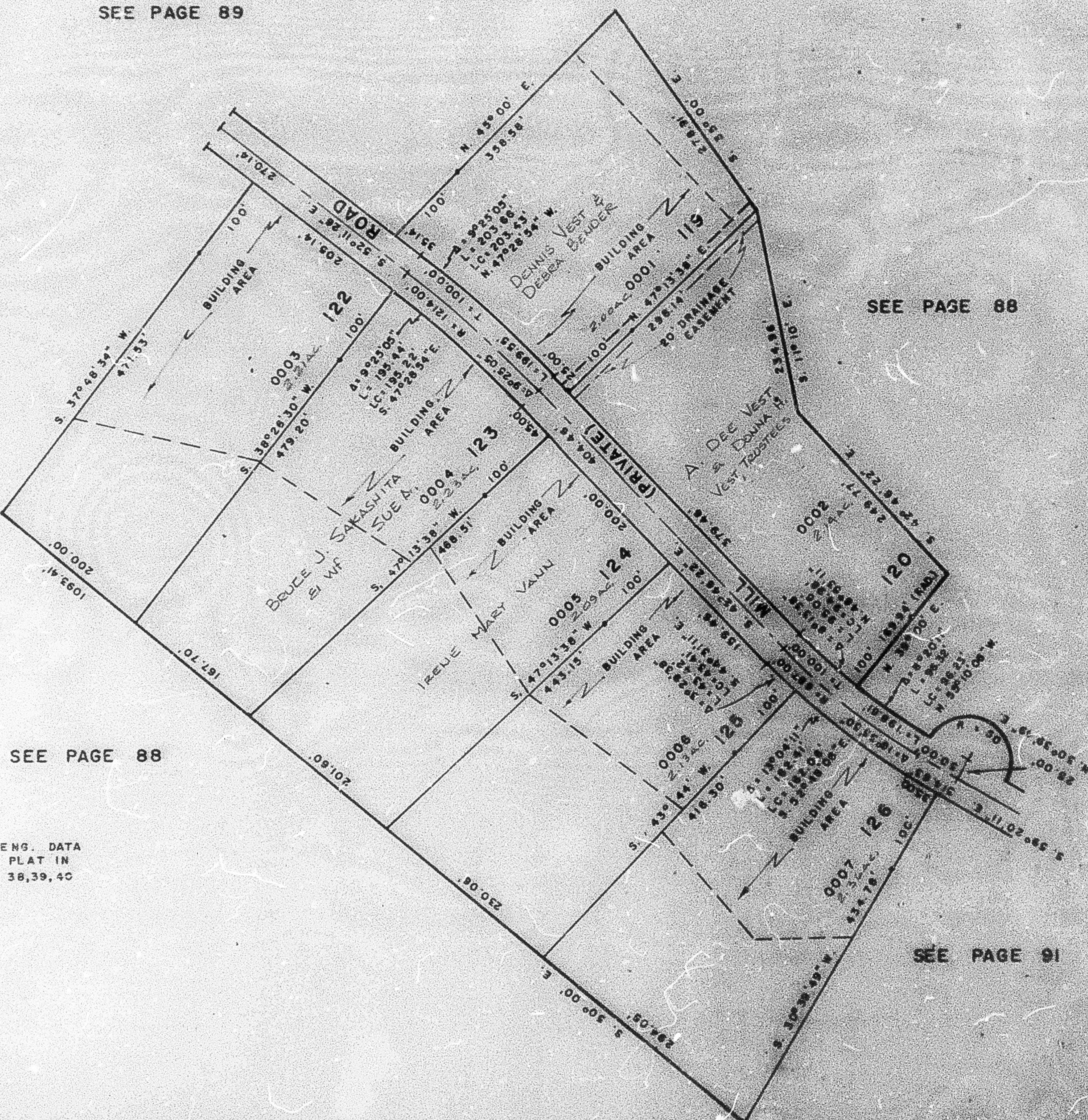
PREFIX : 23-090

SCALE 1" = 100'

EXCEPT WHERE OTHERWISE SHOWN
 ALL LOTS OWNED BY
 BASIN LAND DEVELOPMENT CO.

SEE PAGE 89

SEE PAGE 88



SEE PAGE 88

FOR COMPLETE ENG. DATA
 SEE ORIG. DED. PLAT IN
 BOOK 24, PAGES 38, 39, 40

SEE PAGE 91